



© graphic concrete®

Concrete stories

© **graphic concrete**[®]

Making a concrete impression

The company

Graphic Concrete is a proprietary technology that enables the reproduction of attractive and durable patterns and images on prefabricated concrete surfaces such as facades, partitions, walls, floors, and pavement slabs. It provides both timeless and visually aesthetic details that enhance the architectural appearance of the building.

From the beginning, Graphic Concrete technology was developed as a tool for architects and designers. With this tool they could integrate their visual creativity into construction projects and design large-scale concrete surfaces. All building parts prefabricated by means of horizontal casting are suitable applications.

Today, Graphic Concrete is a proven concept within the prefabrication concrete industry. Since our foundation in 2002, Graphic Concrete solutions have been used globally in over 1500 projects throughout 32 countries. Our list of international projects demonstrates the vast range of designs in which architects can use Graphic Concrete: whether the project is public, residential, commercial, industrial or infrastructural in nature.

Using Graphic Concrete, architects and designers are able to turn their visions into impressive buildings and structures. Our products can be tailored, and the outcome of each project is unique.

Our technology

Our solution is to print the desired image on the paper, which is then sent to the local concrete prefabrication company for casting. When the concrete has set, the membrane is removed and the panel surface is washed to reveal the aggregates in the concrete. The image results from the contrast between the fair face and the exposed aggregate surface. Read more about the production from [page 78](#).

Easy, safe, and cost efficient solution

Creating excellence in architecture does not have to be expensive. Our solution is cost efficient as the surface is manufactured ready for installation, and as such requires no additional cladding. Maintenance-free facades are especially important on tall structures, in terms of safety and overall costs.



Creating concrete stories

This book includes a small sample of our references, each one better than the next and each with their own story to tell. Graphic Concrete has played an important role in the interpretation of all these stories. Small excerpts from these stories can be read on the following pages. You can read the entire story behind each project on our website at: www.graphicconcrete.com/projects

Graphic concrete paper rolls.

Services

Solution

After years of development, Graphic Concrete has grown into a business offering a broad range of services. At the heart of our business is our essential product: the Graphic Concrete paper. The paper enables manufacturing of attractive and durable patterns and images on prefabricated concrete surfaces. Our solution is a tool for architects and designers to integrate visual creativity into construction projects, while also serving the builders, investors and developers with a highly visual and everlasting result. We serve with solid expertise and know-how, and we offer consultation and training for all our partners, from architects and prefabrication companies to builders, investors and developers.

Architect Consulting

Designing a pattern for a Graphic Concrete surface is relatively simple. A well-functioning pattern does require, however, some knowledge regarding repetition, contrast and the use of rasters, for example. Our architects and graphic specialists will guide you through the design process and provide design services if needed. You can also take advantage of our expertise and outsource the pattern design to us, releasing your time to focus on the big picture. You can also choose a ready-made pattern from our collection – all of the patterns are listed on our website:

www.graphicconcrete.com

Prefabrication Training

Prefabricating elements with Graphic Concrete is not more difficult than the regular prefabrication process, but it still requires a variety of details to be acknowledged before the actual casting can be started. We provide materials and training sessions for all prefabrication clients. We also offer general consultation regarding the use of Graphic Concrete based on our extensive knowledge of concrete construction and concrete design.

Advantages

The Graphic Concrete technique is easy to use

- The paper is disposable and flexible to use; it can be cut into small sheets or larger pieces can be joined together. There are no limitations to the element sizes.
- It can be used with very different types of concrete mixes.
- It requires no special equipment. A factory that can make exposed aggregate surfaces can also make Graphic Concrete.
- It requires no special structural adjustments. The exposed areas are only about one millimeter deep, so the image does not affect the thickness of the panel.

The Graphic Concrete paper is an environmentally friendly product

- The paper is recyclable and safe to use.
- It does not emit any harmful gas or chemicals.
- It reduces the use of solvent based materials and dust inconvenience during production.
- It does not have any effect in regards to the environmental loading of a building.

The Graphic Concrete surface is finished and assembly-ready directly after production

- It reduces the need for additional material use on the facade (e.g. additional cladding, treatments or paints).
- It also reduces the need for additional scaffolding at the construction site, which minimises any disruptions at the site and saves time during construction.
- The outcome is 100 % made of concrete and the surface is as durable as concrete itself.
- A Graphic Concrete surface is virtually maintenance free, which saves costs during the whole lifespan of the building.



Helsingin Kahvimylly and Kahvipannu Housing

Helsinki, Finland 2015

Architecture: Arkkitehtitoimisto Petri Rouhiainen

Design: Aimo Katajamäki

Developer: Lemminkäinen

Prefabrication: Parma Oy

Pattern: Unique repeating pattern

Paulig's Coffee Roastery was inaugurated in Vuosaari, Helsinki in 1968. About ten years ago, the coffee roastery moved away and apartments were built on the former coffee factory site. The area is called the Café Quarter and several street names and condominiums tell the coffee history of the area, as does the Helsingin Kahvimylly and Kahvipannu (Helsinki Coffee Grinder and Coffee pot), both with coffee related patterns in Graphic Concrete.

Photos
Graphic Concrete Ltd





- 8 Wurn Ponds Police Station, Australia
- 10 Zwembadsite Housing, Belgium
- 12 Saint Francis Assisi School, Canada
- 13 Beroun Parking House, Czech Republic
- 14 Cortex Science Park, Denmark
- 16 Musicon Samspillet, Denmark
- 17 Hotel Hampton by Hilton, Estonia
- 18 Viborg Landsarkiv Provincial Archive, Finland
- 20 Hämeenlinna Provincial Archive, Finland
- 22 Skanska Headquarters Finland, Finland
- 24 Delfiinikortteli Sitadelli Housing, Finland
- 26 Ulappatori Housing, Finland
- 28 Länsisatamankatu 23 Housing, Finland
- 30 Joensuu Elli Housing, Finland
- 32 Espoo Hospital, Finland
- 34 Tikkurila Daycare, Finland
- 36 Helsingin Tervapääskynen Housing, Finland
- 38 Martinlaakso Parking House, Finland
- 39 Pihlajalaakso Sound Barrier, Finland
- 40 Crevin Upper Secondary School, France
- 42 Marguerites Housing, France
- 44 Dresden Center for Nanoanalytics, Germany
- 46 Neckarbogen Heilbronn Housing, Germany
- 48 Ospedale Giovanni XXIII Chapel, Italy
- 50 Semba Center Building, Japan
- 52 UPOPOY National AINU Museum and Park, Japan
- 54 Ringweg Zuid Groningen, The Netherlands
- 55 Ymere Eenhoorn Circuit, The Netherlands
- 56 Tau Shopping Center R13, Norway
- 58 Malmö Latin School, Sweden
- 59 Skytte School, Sweden
- 60 Skandion Clinic, Sweden
- 62 Sickla Station, Sweden
- 64 Plejecenter Sønderhaven Care Center, Denmark
- 65 Skanska Headquarters Sweden, Sweden
- 66 Archive Center Lund, Sweden
- 68 Kockums Park, Sweden
- 70 Tändstickan Parking House, Sweden
- 72 Lincoln Museum and Library Addition and Renovation, USA
- 73 Josep Guinovart Primary School, Spain
- 74 Marshfield Junior High School, USA
- 76 Bluewaters in Dubai, UAE
- 78 Graphic concrete in the precast factory
- 79 GCCollection™ patterns available as library to REVIT and Archicad



Waurin Ponds Police Station

Victoria, Australia, 2014

Architecture: Strata PNA Architects

Builder: Lyons Constructions

Prefabrication: Metro Precast

Pattern: Unique pattern

Photos
Reid Construction Systems





Zwembadsite Housing

Leuven, Belgium, 2008

Architecture: Bob361 architects

Design/Graphics: Bob361 architects

Developer: Implant nv, Extensa nv

Prefabrication: Eurobeton

Pattern: Unique repeating pattern

"The design completes Smets Square and its residual spaces, while creating new passages, integrating the existing Fabiola building, and enclosing a new informal semi-public/semi-private courtyard. The apartment building acts as an intermediate zone between two different scale levels, and each building block is finalised by taking its own logic into account." *Bob361architects*

Photos
Graphic Concrete Ltd





Beroun Parking House

Beroun, Czech Republic, 2014

Architecture: H.A.N.S. Architekti

Developer: H.A.N.S. stavby, a.s.

Prefabrication: H.A.N.S. stavby, a.s.

Pattern: Unique repeating pattern

In the middle of old town Beroun, a town located close to Prague, there is a beautiful parking house in precast concrete with huge running horses patterned with Graphic Concrete. The unique images on concrete surfaces allowed placing a modern building among picturesque historical buildings.

Photo
Aleš Jungman

Saint Francis Assisi School

Montréal, Canada, 2019

Architecture: Heloise Thibodeau Architect Inc

Prefabrication: BPD L Precast Concrete International

Pattern: Unique pattern

Artist Shelley Miller designed the facade as part of Quebec's public art integration policy, adding artistic touch to the project. With anti-graffiti protection and efficient installation, this extension blends innovation, durability, and aesthetics—demonstrating the power of Graphic Concrete in modern school architecture. The Saint Francis Assisi School awards the **2022 ACI Excellence in Concrete Construction Award**.





Cortex Science Park

Odense, Denmark, 2015

Architecture: Creo Arkitekter A/S

Builder: CJ Anlæg A/S

Prefabrication: DS Elcobyg A/S

Pattern: GCCollection™ Ikat, Píksel,
Round Rough 200%, Textilia 200%

The Cortex Science Park is Denmark's largest center for welfare and robotics technology. Currently, Cortex houses 60 companies and institutions with a special focus on health and welfare technology and business promotion. In September 2015, the research park expanded with this new Videnbyen building, centrally located in Cortex Park. Here, bridges will be built between the area's educational institutions and the research parks which enable knowledge sharing. Videnbyen receives a younger company profile and is primarily aimed at start-up companies that will benefit from very special incubator activities.

Photos
Helene Høyer Mikkelsen





Musicon Samspillet

Roskilde, Denmark, 2021

Architecture: Arkitema K/S Builder: Jensen & Nielsen Byggeri

Prefabrication: CRH Concrete

Pattern: Unique image

Musicon Samspillet is a commercial building having an astonishing facade with Graphic Concrete located in Roskilde, Denmark. The building is designed by a well-known Danish architect firm, Arkitema and produced by CRH Concrete. The image on the facade was created by a German-Danish sculptor and visual artist, Christian Lemmerz.

Photos
CRH Concrete & Niels Nygaard

Hotel Hampton by Hilton

Tallinn, Estonia, 2024

Architecture: Arhitekt Tarbe

Prefabrication: E-Betoonelement OÜ

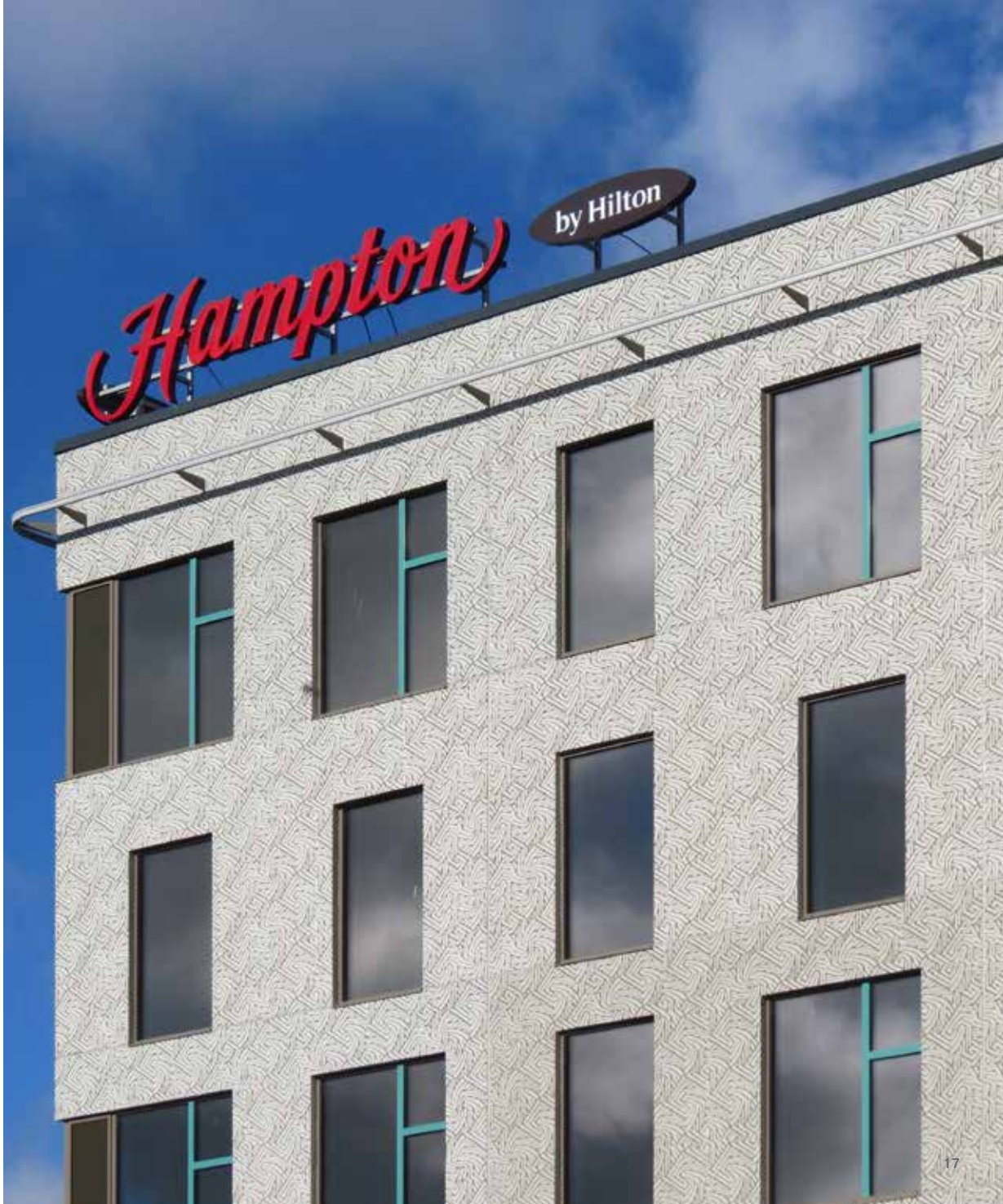
Pattern: GCCollection™ Dead End

“GCCollection DeadEnd is perfect pattern since it does not require aligning of elements.

Makes it very cost-efficient
and also easy for the precaster.”

Architect Tõnis Tarbe

Photos
Graphic Concrete Ltd





Viborg Landsarkiv Provincial Archive

Viborg, Denmark, 2015

Architecture: Schmidt Hammer Lassen Architects

Design/Graphics: Grethe Sørensen, Textile Designer

Builder: KPC BYG A/S

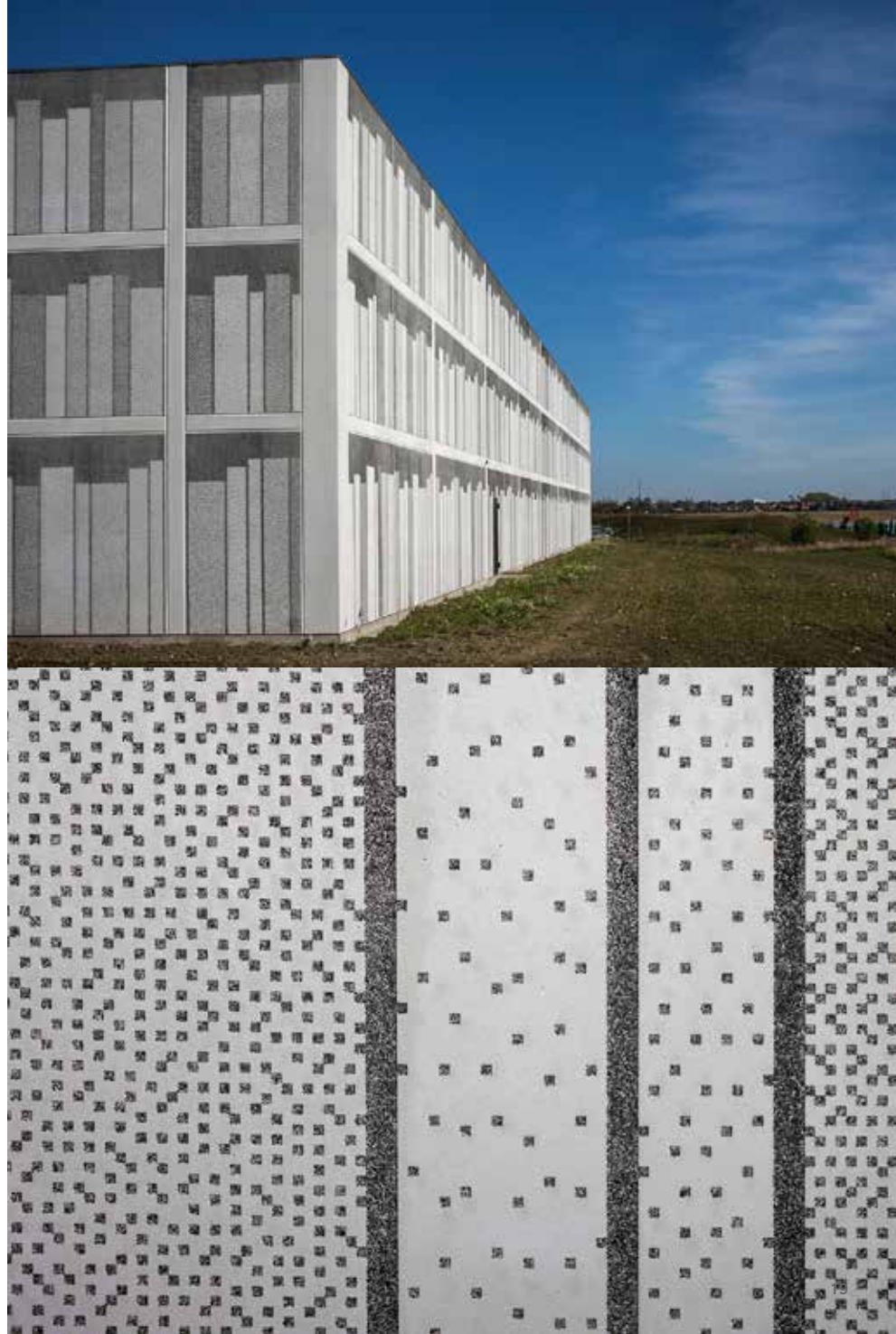
Prefabrication: Confac A/S

Pattern: Unique repeating pattern

Using Graphic Concrete, the architects decided to decorate the entire facade of the building with a large bookcase-like picture. The Viborg Provincial Archive is an excellent example of how Graphic Concrete can be used to highlight the purpose of the building and to create depth for the building facade. The concrete facade shows dots at different distances when looking close up. But from a distance, the facade resembles a three-dimensional bookcase.

"The new archive needed to be sustainable, simple, modern and minimalist. We also wanted to add a piece of art to express the purpose of the building" *Rasmus Kierkegaard, Partner, Schmidt Hammer Lassen Architects*

Photos
Helene Høyer Mikkelsen





Hämeenlinna Kansallisarkisto Provincial Archive

Hämeenlinna, Finland, 2009

Architecture: Heikkinen-Komonen Architects

Design/ Graphics: Aimo Katajamäki, Aimonomia

Builder: Senate Properties Ltd.

Prefabrication: Parma Oy

Pattern: Unique repeating pattern

"We decided to coat the facades of the archive with graffiti. This black national memory stick is embroidered with tags found in the depths of the archive: from peasants' bookmarks and the letters of kings to contemporary internet symbols. This was made possible by the graphic concrete technology." *Mikko Heikkinen, Architect, Heikkinen-Komonen Architects*

Photos
Graphic Concrete Ltd
Jussi Tiainen





Skanska Headquarters Finland

Helsinki, Finland, 2011

Architecture: L Architects (Larkas & Laine Oy)

Prefabrication: Ämmän Betoni Oy

Pattern: Unique repeating pattern

"The inspiration for this particular pattern was the historic "Nolli Map of Rome" drawn in the 1700s. From afar the pattern looks like natural rock, but up close it reveals an old city map. Observed in detail one can even make out the street names, courtyards and churches. But in reality you cannot find this city anywhere, as the map has been drawn on top of the image of an oak leaf; the leaf stems are transformed into streets and the spaces in between become city blocks and buildings." *Katia Salo, Architect, L Architects*

Photos
Tiia Ettala
Graphic Concrete Ltd





Delfiinikortteli Atlas Housing

Helsinki, Finland, 2023

Architecture: Arkkitehtitoimisto HVM Oy

Design: Samuli Naamanka

Developer: Skanska

Prefabrication: Rudus Ämmän Betoni Oy

Pattern: Unique repeating pattern

Photos
Graphic Concrete Ltd

Delfiinikortteli Sitadelli Housing

Helsinki, Finland, 2021

Architecture: Arkkitehtitoimisto HVM Oy

Design: Samuli Naamanka

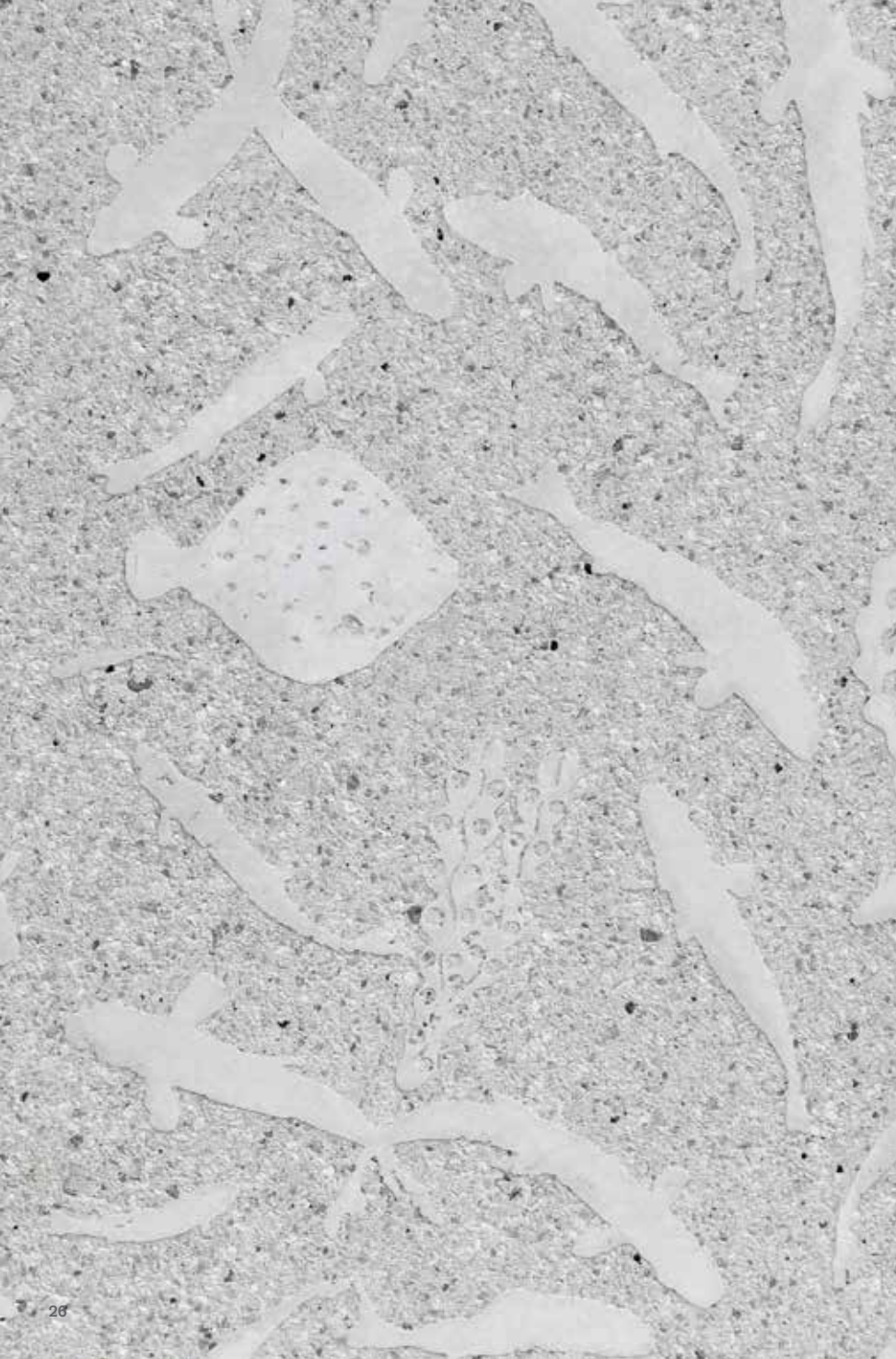
Developer: Bonava Oy

Prefabrication: Rudus Ämmän Betoni Oy

Pattern: Unique repeating pattern

Photos
Graphic Concrete Ltd





Ulappatori Housing

Espoo, Finland, 2012

Architecture: Petri Rouhiainen Architects Ltd.

Design/Graphics: Aimo Katajamäki, Aimonomia

Builder: YIT Construction Ltd.

Prefabrication: Parma Oy

Pattern: Unique repeating pattern

"The inspiration for the patterns came from the site's proximity to the sea. The repeating patterns feature fish and shellfish from the Baltic Sea, and their scale is close to their natural size. These patterns are complemented by abstract lines resembling sea waves flowing across the facade." *Aimo Katajamäki, Graphic Designer, Aimonomia*

Photos
Kuvatoimisto Kuvio Oy





betoni

*Winner of the Finnish
concrete structure award
"Betonirakenne" 2014*

Länsisatamankatu 23 Housing

Helsinki, Finland, 2013

Architecture: Huttunen Lipasti Pakkanen Ltd.

Builder: NCC Construction Ltd., Helsinki Housing Office

Prefabrication: Ämmän Betoni Oy

Pattern: GCSmooth™

A smooth surface is achieved when casting on an empty paper. The special GCSmooth paper transforms the concrete surface into velvety soft and slightly shiny. We especially recommend this treatment for precast white concrete.

Photos
Graphic Concrete Ltd





Joensuun Elli Housing

Joensuu, Finland, 2010

Architecture: Arcadia Oy Arkkitehtitoimisto

Graphics: Maria Mughal, Woop

Builder: Student Housing Joensuun Elli Ltd.

Prefabrication: Pielisen Betoni Oy Lieksa

Pattern: Unique image

The facades of the building feature an impressive work of art realised in graphic concrete. Entitled "Sisters", the design is based on three paintings by artist Maria Mughal: "Poem", "Nature" and "Helen of Troy". Mughal's original inspiration for the series of works was based on concrete as a material – often considered gray and cold, even impersonal. The works of art on the end facades of the complex are the very opposite – colourful and large 3 x 3,8-metre paintings. The artist wanted the female figures of the paintings to make direct contact with viewers.

Photos
Graphic Concrete Ltd





EDON SAIRAALA
ESBO SJUKHUS

Espoo Hospital

Espoo, Finland, 2016

Architecture: Arkkitehdit Tommila

Co-architecture: VPL-Arkkitehdit

Developer: Lujatalo Oy

Prefabrication: Lujabetoni Oy

Pattern: Unique repeating pattern

“Graphic Concrete offered the perfect solution for designing both the large surfaces of the parking garage and the small surfaces in the courtyards – it allowed me to design on both a big scale and a small scale. When viewed up close the pattern reveals the point raster, but as you move away the vertical lines take precedence. When viewing the entire building, the horizontal appearance is emphasised by the horizontal seams that divide the pattern. Graphic Concrete patterns make it possible to either conceal or highlight the seams between the elements, as you prefer.” *Architect Mikko Soini, Tommila Architects*

Photos
Kuvatoimisto Kuvio Oy





Tikkurila Daycare

Vantaa, Finland, 2019

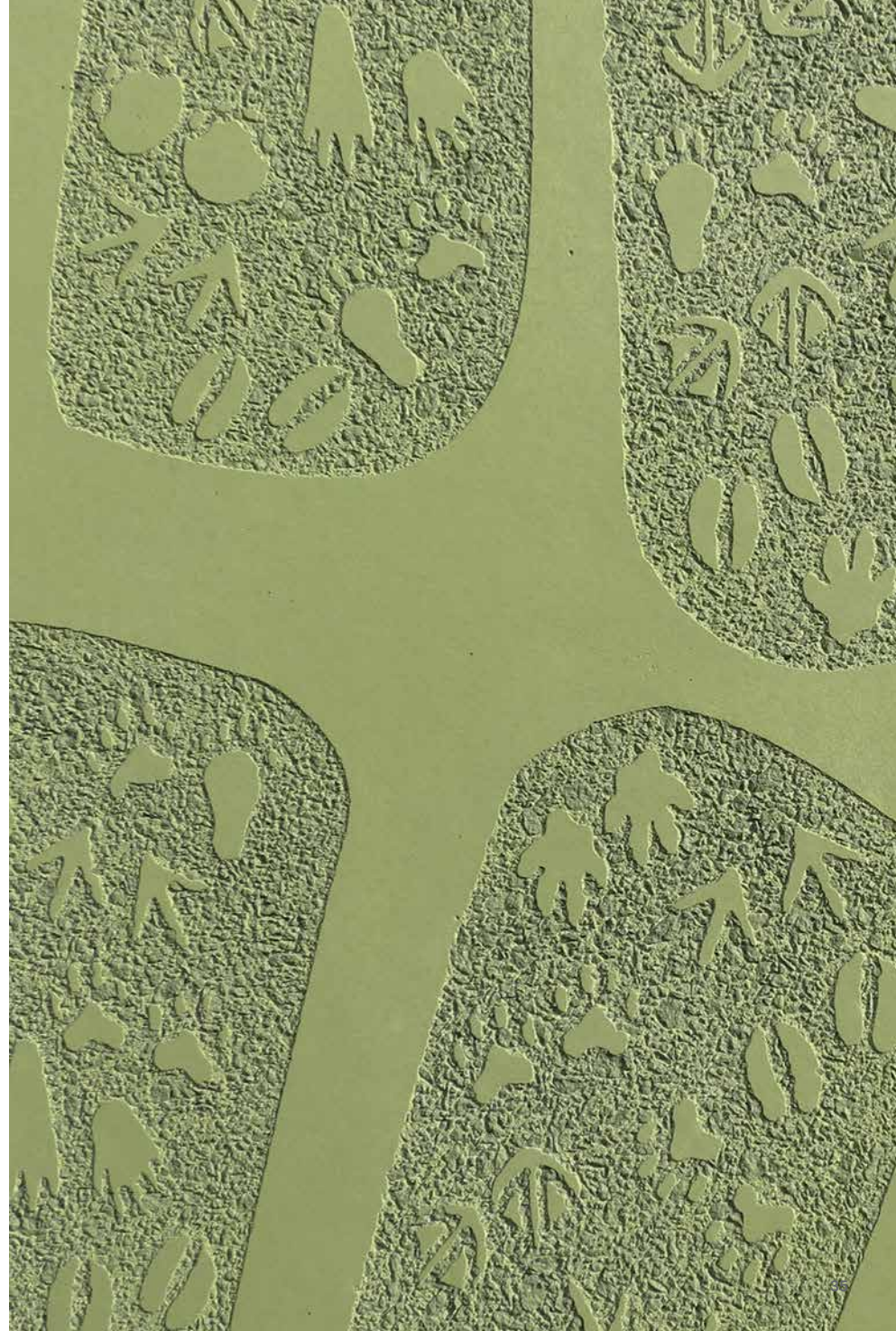
Architecture: Parviainen Arkkitehdit Oy

Prefabrication: SBS Betoni Oy

Pattern: Unique repeating pattern

Parviainen Arkkitehdit Oy has illustrated patterns on the crocodile surface with Graphic Concrete. After prefabrication work, the crocodile has been painted as green and this looks more alive creature.

Photos
Graphic Concrete Ltd





Award 2012

Helsingin Tervapääskynen Housing

Helsinki, Finland, 2011

Architecture: Arkkitehtitoimisto Helamaa ja Pulkkinen Oy

Graphics/Photographer: Tapio Vanhatalo

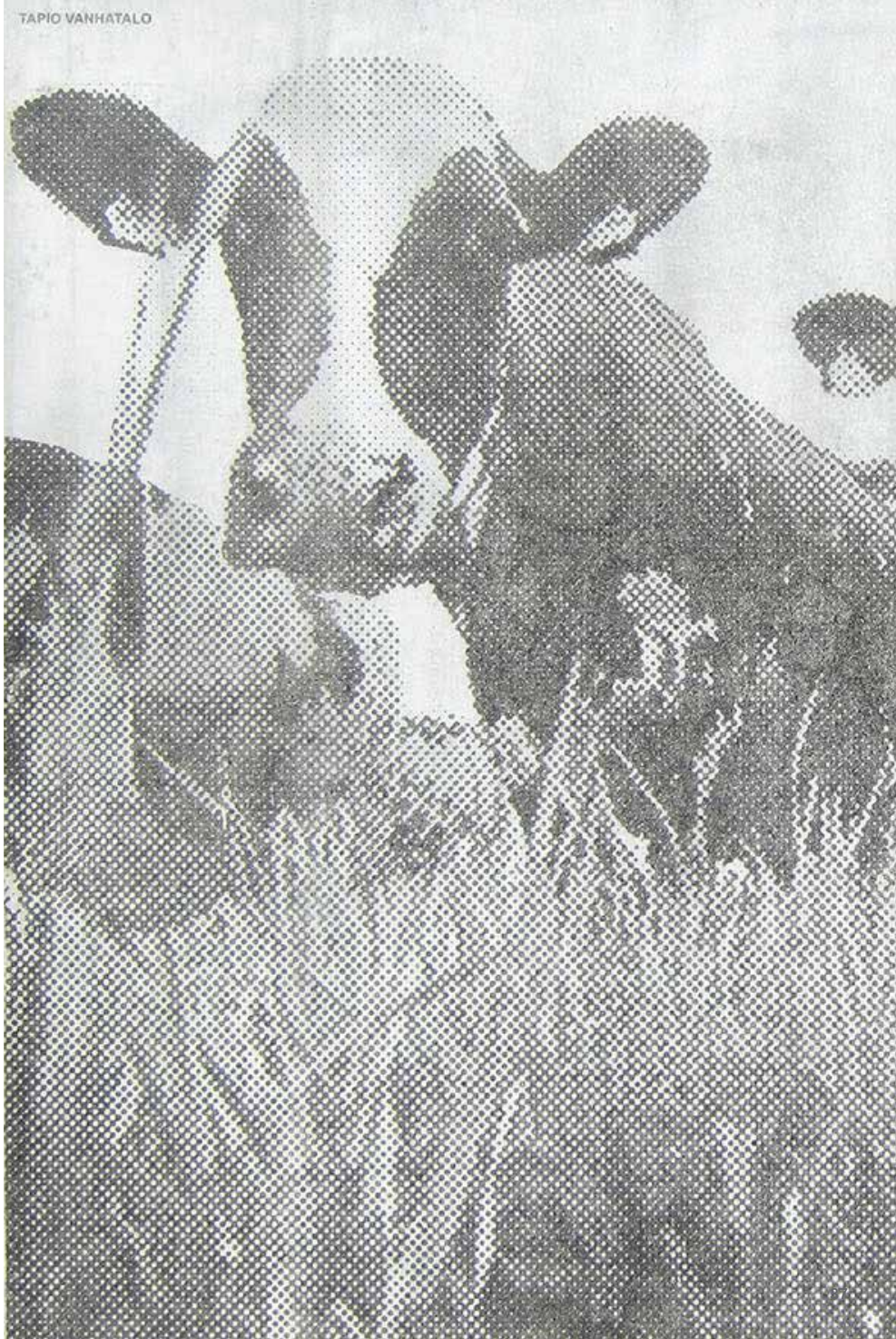
Builder: VVO Rakennuttaja Oy

Prefabrication: Parma Oy Forssa

Pattern: Unique repeating pattern

The gentle look of a group of cows in a newspaper picture caught the attention of the architect, whose task was to reflect the history of the area of a new residential building. He resolutely wanted to use this specific picture on the cold retaining wall as the building stands on the same spot as veterinary stables some centuries ago.

Photos
Graphic Concrete Ltd





Martinlaakso Parking House

Vantaa, Finland, 2015

Prefabrication: Parma Oy Forssa

Pattern: GCCollection™ Grass & Grass nega

Photos

Graphic Concrete Ltd

Pihlajalaakso Sound Barrier

Kuopio, Finland, 2014

Architecture: Ramboll Finland Oy

Design: Teemu Matilainen / Ramboll Finland Oy
and Graphic Concrete

Builder: City of Kuopio

Prefabrication: Betonimestarit Oy

Pattern: Unique repeating pattern

Photos

Kuvatoimisto Kuvio Oy





Crevin Upper Secondary School

Crevin, France, 2014

Architecture: Jean-Francois Golhen Architecte

Builder: Département Ile et Vilaine

Prefabrication: MSA

Pattern: Unique image

The facade depicts 28 iconic persons who have had their influence in the cultural development of Bretagne, including the author Colette, the artist Clotilde Vautier, the film director Charles Vanel and the poet Gilles Fournel.

Photos
Graphic Concrete Ltd





Marguerites Housing

Paris, France, 2012

Architecture: Skylines Architecture & Urbanisme
& Espaces Libres Architecture et Urbanisme

Prefabrication: DECOMO SA

Pattern: Unique repeating pattern

Photos
Graphic Concrete Ltd





Dresden Center for Nanoanalytics

Dresden, Germany, 2018

Architecture: Klaus-Jürgen Schnell, SHP Architekten GmbH

Artist: Klaus-Jürgen Schnell, SHP Architekten GmbH

Buider & Client: SIB, NL Dresden II, Ostra-Allee 23, 01067 Dresden

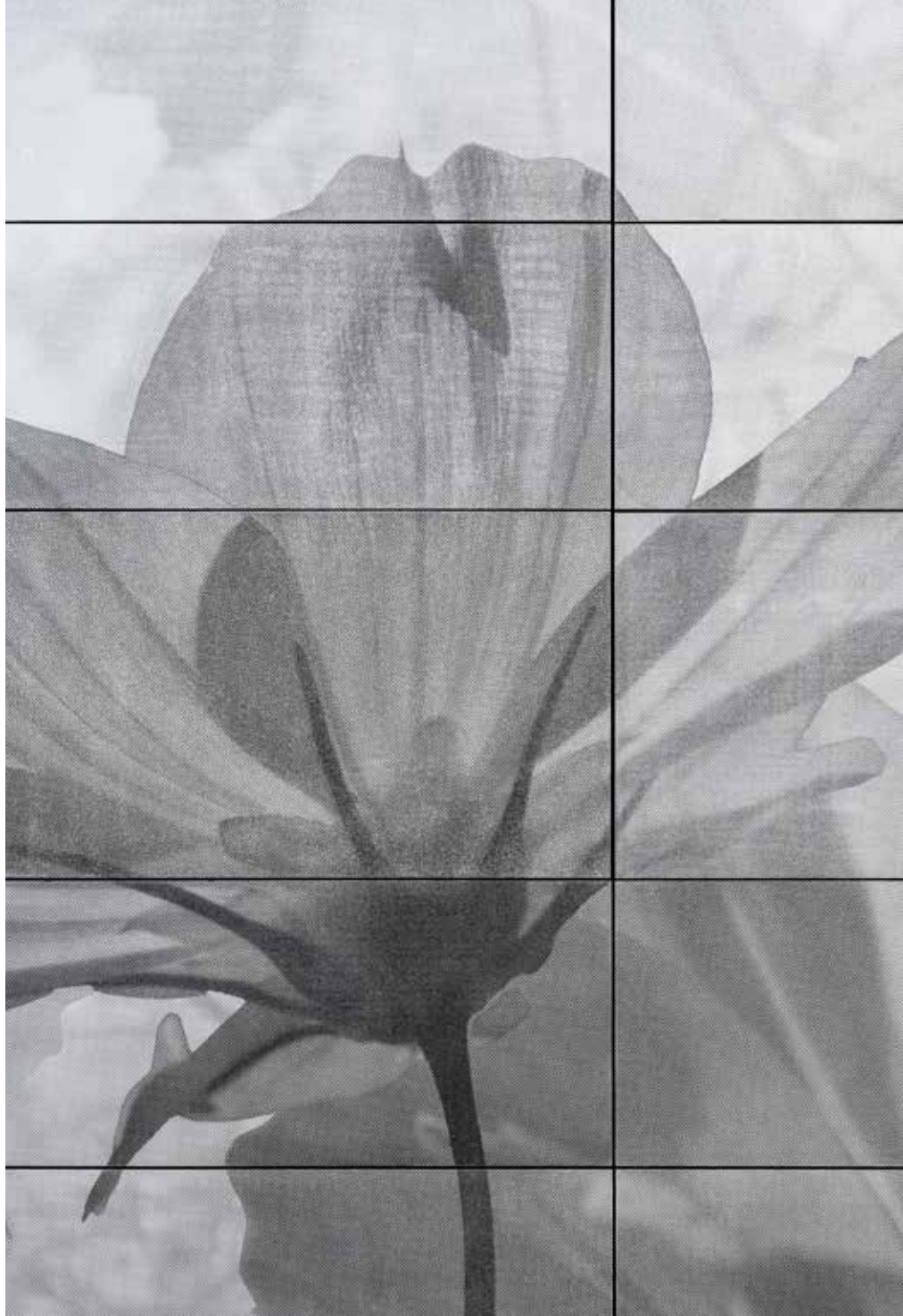
Prefabrication: Hentschke Bau GmbH, Zeppelinstraße

Pattern: Unique image

The initial idea was to use glass printing with a special optical effect on the facade. The solution did not reach the expectations, so the designers found another way to impart their ideas; the durable concrete was combined with a delicate, beautiful scenery of poppies made with Graphic Concrete. The main theme of this design is the microscope; some of the large flowers look very sharp and others are blurred.

The project was awarded a recognition in the Saxon State Prize for Building Culture 2019.

Photos
Steffen Spitzner





Neckarbogen Heilbronn Housing

Heilbronn, Germany 2019

Architecture: weinbrenner.single.arabzadeh. architektenwerkgemeinschaft

Developer: Kruck + Partner Wohnbau und Projektentwicklung Beteiligungsgesellschaft mbH

Prefabrication: Laumer Bautechnik GmbH

Pattern: Unique repeating pattern

Photos
Graphic Concrete Ltd





Ospedale Giovanni XXIII Chapel

Bergamo, Italy, 2012

Architecture: Traversi + Traversi Architetti and Aymeric Zublena

Graphics: Stefano Arienti

Builder: Styl-Comp Group

Prefabrication: Styl-Comp Group

Pattern: Unique image

"The inspiration came from the Garden of Eden, as reflected by the flowers, plants and shrubs that are repeated in the pattern. The floral imagery was realised using delicate rasterised images and a dedicated concrete mix design, creating an overall impression that is light, airy and calm. The natural light that enters the chapel through round openings in the walls and in the ceiling completes the breathtakingly beautiful effect." *Ivo Allas, Design Director, Styl-Comp Group*

Photos
Camillo Bonfanti, Styl-Comp Group
Graphic Concrete Ltd





←P

SAMBA CENTER BLDG
4

SAMBA CENTER BLDG

久太郎町1
Kudomatsu-1
町名大衆

←

←

Semba Center Building

Osaka, Japan, 2014

Architecture: Ishimoto Architectural & Engineering Firm Inc.

Graphics: Samuli Naamanka

Builder: Kumagai Gumi Co., Ltd.

Prefabrication: Asahi Building-Wall Co., Ltd. (AGB)

Pattern: Unique repeating pattern

"The design assignment for a Kimono pattern was an extremely interesting challenge, as the kimono is a very traditional Japanese garment. In my subsequent research I learned about kimonos and their different varieties, such as Nami and Asanoha kimonos. I found out that each designer creates his or her own variation of the theme and that there is no one standard design," *Samuli Naamanka, Interior Architect, MA*

Photos
Graphic Concrete Ltd





UPOPOY National AINU Museum and Park

Hokkaido, Japan, 2020

Architecture: Takano Landscape Planning Co.,Ltd

Design: Takano Landscape Planning Co.,Ltd

Developer: Hokkaido Regional Development Bureau (MLIT)

Prefabrication: NIKKO

Pattern: Unique pattern

"It is such a great honor to be acclaimed by visitors and by the Ainu Museum that it is such a wonderful entrance space for the first national symbolic park of the Ainu" *Mr. Shuichi Murata, CEO of Takano Landscape Planning Co. Ltd.*

Photos
Graphic Concrete Ltd





Ringweg Zuid Groningen

Groningen, The Netherlands, 2022-2025

Architecture: Syb van Breda

Client: Rijkswaterstaat

Prefabrication: Vrijenban B.V. Zuidbroek

Pattern: Unique image

The Ringweg Zuid Groningen project, designed by Syb van Breda & Co Architects, seamlessly integrates infrastructure, heritage, and art. This ambitious initiative at the national level transforms Groningen's landscape by enhancing green spaces while celebrating the city's historical identity. The architects skillfully balanced the demands of modern roadway design with the preservation of historical character, employing an innovative technique—Graphic Concrete to narrate Groningen's story.

Photos

Raymond Bos (WR Visuals & Media Raymond Bos Beeldnummer)

Ymere Eenhoorn Circuit

JN Amsterdam, The Netherlands, 2023

Architecture: Heren 5 architecten

Designer: Michiel Schuurman

Prefabrication: Hillstones B.V.

Pattern: Unique repeating pattern

"We proceeded to create a mock-up since this was the first project for both myself and the precaster using Graphic Concrete. We needed to test aggregates, retarders, and the capabilities of the technique. The testing phase went smoothly and further underscored the extensive capabilities of the technique. I was pleasantly surprised to see how delicate the result turned out to be."

Michiel Schuurman

Photos

Michiel Schuurman





Tau Shopping Center R13

Tau, Norway, 2019-2020

Architecture: Link Arkitekter (Martin Strømstad)

Design: Anita Brekke

Prefabrication: Finnøy Betong

Pattern: Unique repeating pattern

At the Tau Shopping Center in Tau, Norway, the amazing Graphic Concrete gives an identity and elevates the architectural experience of the area. Tau is known for its mill- and mill-production that dates back to the 13th century. The pattern designs "Corn" and "Waterfall" were inspired by the mill industry, but embodied in modern and stylish designs.

The surface of the wall elements is very precise and the concrete castings of top quality. Most concrete elements are 2500 x 11400 mm in size. In order to avoid visible repetition in the "Waterfall" -pattern the designer came up with a solution to partly turn the image 180 degrees and thus create an uneven rhythm in the design.

Photos
Hundven-Clements Photography



RYFYLKE
bakers & boudoirs at



Malmö Latin School

Malmö, Sweden 2013

Architecture: Arkitektgruppen i Malmö

Prefabrication: Abetong AB

Pattern: Unique pattern

The new building, completed in 2014, includes a scene for cultural and media events during and after school hours. The school is characterized by its aesthetic profile, which can mean a rock concert at lunch, radio podcast or live broadcast. This characteristic is featured in the facade of new the school building in the form of small icons in Graphic Concrete.

Photos
Graphic Concrete Ltd

Skytte School

Göteborg, Sweden, 2022

Architecture: Fredblad Arkitekter

Designer: Hanna Hedman

Developer: Göteborg Stad Stadsfastighetsförvaltningen

Prefabrication: Contiga Sverige

Pattern: Unique pattern

Photos
Mariette Svensson



liker på dig

MINI
SVERIGE
KRONOR

KRAM



Skandion Clinic

Uppsala, Sweden, 2014

Architecture: Link Arkitektur Stockholm

Builder: Akademiska Hus Uppsala AB

Prefabrication: Abetong AB

Pattern: Unique repeating pattern

"The white colour and the graphic pattern are common to the various building volumes. We have tried to achieve a 'textile' effect with the pattern to give the large volumes a human appearance. Many who work or have visited the building have speculated about what the pattern actually illustrates. The hotel's staff likens it to a lace curtain, while the clinic's staff sees in it a rain of protons." *Carl-Fredrik Danielson, Architect SAR/MSA, Link Arkitektur.*

Photos
Mervi Junkkonen





Sickla Station

Nacka, Sweden, 2017

Design: Elsa Chartin

Prefabrication: Strängbetong AB Herrljunga

Pattern: Unique repeating pattern

The textile patterns of artist Elsa Chartin ornament the concrete at Sickla Train Station in Stockholm, Sweden.

Chartin had always been interested in craftsmanship and the special impact of unexpected material pairings. For this project, she envisioned simplified graphic patterns of her original works, but in a mild grayscale. So while the tough concrete recalls the site's industrial history, it also sports lively patterns of fishbone, braid, grid, and more.

The result turned out as beautifully as planned. The station is now easily distinguishable from other stops, with the Graphic Concrete patterns giving it a clear identity.

Photos
Anders Fredriksén





Skanska Headquarters Sweden

Stockholm, Sweden, 2013

Architecture: Strategisk Arkitektur

Builder: Skanska Stomsystem AB

Prefabrication: Skanska Stomsystem AB

Pattern: Unique repeating pattern

The ground slabs at the entrance are made in Graphic Concrete, with Skanska's logo as pattern. The Graphic Concrete pattern gives a natural friction to the slabs, especially important in the winter time.

Photos
Graphic Concrete Ltd

Plejecenter Sønderhaven Care Center

Måløv, Denmark 2012

Architecture: Trude Mardal Arkitekt Maa

Designer: Ane Mette Ruge

Contractor: Einar Kornerup

Prefabrication: Aarhus Cementvarefabrik A/S

Pattern: Unique repeating pattern

"The floor is made of large concrete slabs that create the impression of a rug, one that is full of shapes and repeating patterns. While the larger patterns can be discerned immediately, the smaller ones require closer examination. As a growing number of residents in nursing homes suffer from some form of dementia, the patterns serve as elements that help stimulate their mind, evoking associations and memories of the past. The concrete "rug" conceals everyday objects and evocative shapes in the form of repeating patterns. One can find dogs, cats, buckets, spades, caravans, cars, tractors, flowers and leaves in the patterns. Together they help make the entrance cosy and interesting." *Trude Mardal, Architect MAA, Entasis*

Photos
Graphic Concrete Ltd





Archive Center Lund

Lund, Sweden, 2012

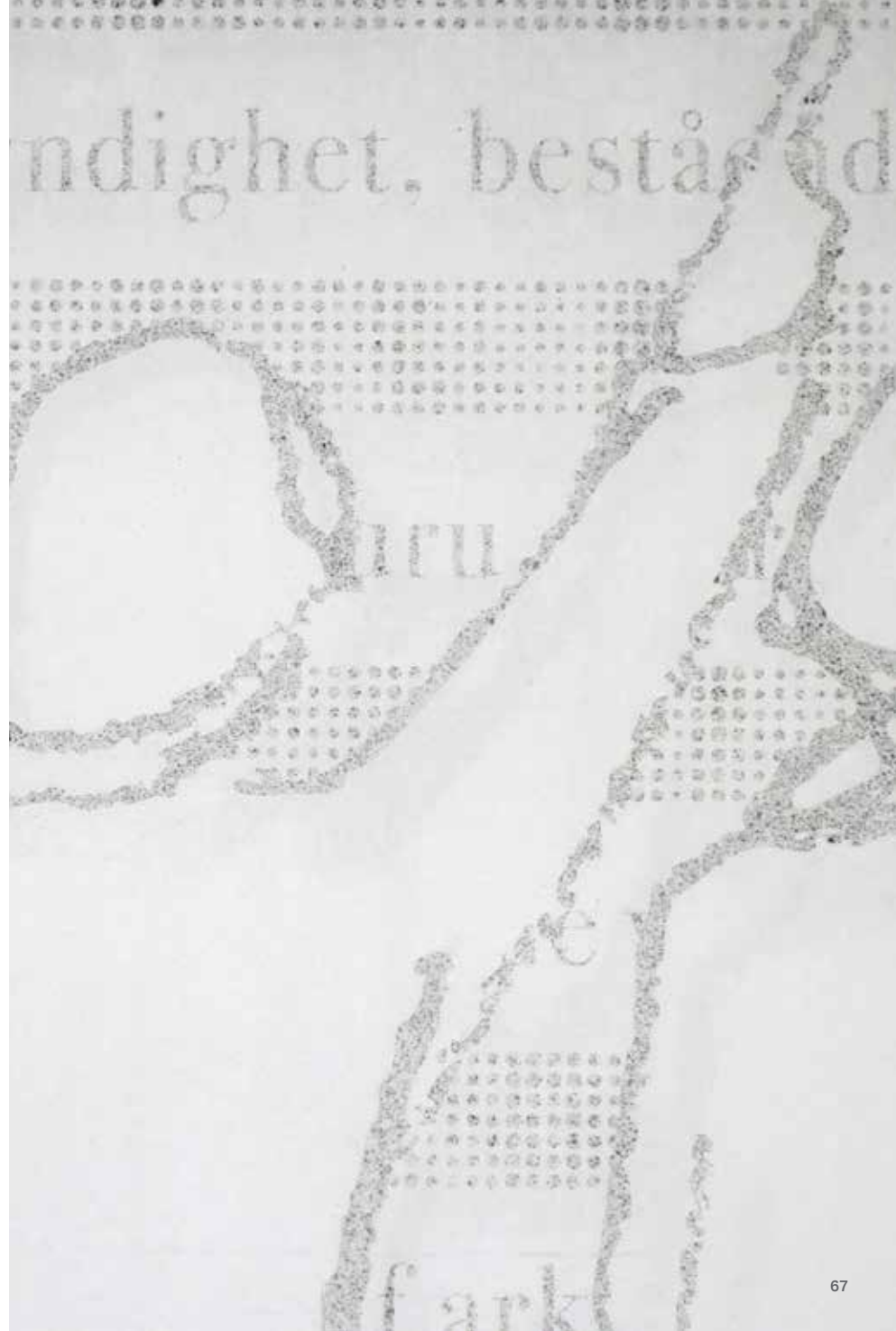
Architecture: Tage Möller Arkitektbyrå AB

Prefabrication: Strängbetong AB Herrljunga

Pattern: Unique image

"The first Swedish national archive regulations dating back to the 17th century have formed the pattern on the wall in front of the grand lecture hall. The 'spectators' came from my notes from one of the many meetings concerning how to decorate the wall. Sometimes notes can be useful..." *Nils P Johansson, Architect, Tage Moeller Arkitektbyrå AB*

Photos
Graphic Concrete Ltd





Kockums Park

Malmö, Sweden, 2010

Architecture: White Arkitekter AB Malmö

Builder: Midroc Property Development AB

Prefabrication: S:t Eriks Uppsala

Pattern: Unique repeating pattern

"We were inspired by the history of the site. Kockums AB was a Swedish shipyard and we focused on the workers, the so-called 'kockumiterna'. We wanted to show their everyday lives balancing on high scaffolding surrounding the ship." *Nina Lindegaard, Landscape Architect MSA*

Photos
Graphic Concrete Ltd





Tändstickan Parking House

Göteborg, Sweden, 2013

Architecture: Arkitektbyrån Design AB, Göteborg

Graphics: Arkitektbyrån Design AB, Göteborg

Builder: Skanska Stomsystem AB Distrikt Väst/Syd

Prefabrication: Kynningsrud Prefab Ab

Pattern: Unique repeating pattern

"The idea to use Graphic Concrete came from the insight that the parking garage is huge and we need to bring down the scale using a graphic pattern. The primary aim was that the persons working in surrounding buildings should have a nice view despite the massive concrete parking house. The nature pattern is used to highlight the contrast between cars/traffic/pollution and nature/animals/fresh air. We wanted a calm and playful feeling." *Henrik Markhede, Architect SAR/MSA, Arkitektbyrån Design*

Photos
Graphic Concrete Ltd
Anne-Charlotte Brettmark





Lincoln Museum and Library Addition and Revonation
Harrogate, Tennessee, 2021

Architecture: McCarty Holsaple McCarty, Inc.

Prefabrication: High Concrete Group, Springboro OH

Pattern: Unique image

Josep Guinovart Primary School
Castelldefels, Spain, 2010

Architecture: Pich-Aguilera

Prefabrication: Hormigones Prefabricados de España
S.L.U.

Pattern: Unique repeating pattern

"The building is a school, a primary school where children start to learn about what numbers are and what they mean in our world. You can deal with numbers nearly every day; you have to calculate, remember the telephone number of your friends and family, computer language is based on numbers. You find them everywhere: mathematics, physics, and so on. We want to show that they are not only scientific; numbers can be decorative, and they can be art.

It always depends on one's personal point of view." *Ute Müncheberg, Architect, Pich-Aguilera Architects*

Photos
Graphic Concrete Ltd





Marshfield Junior High School

Coos Bay, Oregon, USA, 2021

Architecture: Steele Associates Architects

Pattern: GCCollection™ Birch & Grass Plain 150%

Prefabrication: Knife River Prestress

The new Marshfield Junior High School replaces the deteriorating prior school with a three-story design due to space constraints. Chambers Construction, Knife River, and Steele Associates Architects opted for precast concrete exterior walls and poured-in-place floors and roofs for cost-effectiveness and durability against Oregon Coast weather. Various colors and textures were applied to create an inviting atmosphere. Precast panels featured embedded electrical conduit, Graphic Concrete patterns, and insulation, serving as load-bearing structural elements. The use of precast panels accelerated the construction timeline, crucial for the coastal weather conditions. The design maximized interior light and structural capacity while incorporating aesthetic elements like graphic concrete patterns. Marshfield Junior High stands as a durable, beautiful testament to the versatility of concrete in modern construction, promising longevity for the Coos Bay community.

Photos
James Brian Davies





Bluewaters in Dubai

Dubai, United Arab Emirate, 2021

Pattern: GCCollection™ Atom Cross, Birch, Pikel, Swarm, Vertex

Bluewaters Island in Dubai is a man-made island featuring Ain Dubai, the biggest Ferris wheel in the world. The wheel stands 250 m tall – nearly double the London Eye's height. Walking through the pedestrian shopping and service area to this popular attraction, you can see Graphic Concrete everywhere! Our patterns were used on GFRG cladding panels - all with the same black and white color, making the end result look very sophisticated.

Photos
Graphic Concrete Ltd



Graphic Concrete in the precast factory

Photos Pekka Agarth
Veli-Pekka Rydenfelt



The casting is prepared by cleaning the mould and cutting the paper according to the element drawings. It is recommendable to use a vacuum table.



The paper is spread out on the clean mould table with the retarded side facing the concrete.



The reinforcement is placed on the paper. The casting starts.



The mould is filled with concrete mass.



A vibrating table removes air from the concrete.



The next day, the element is demoulded.



The element is transported to the washing area and the paper comes off.



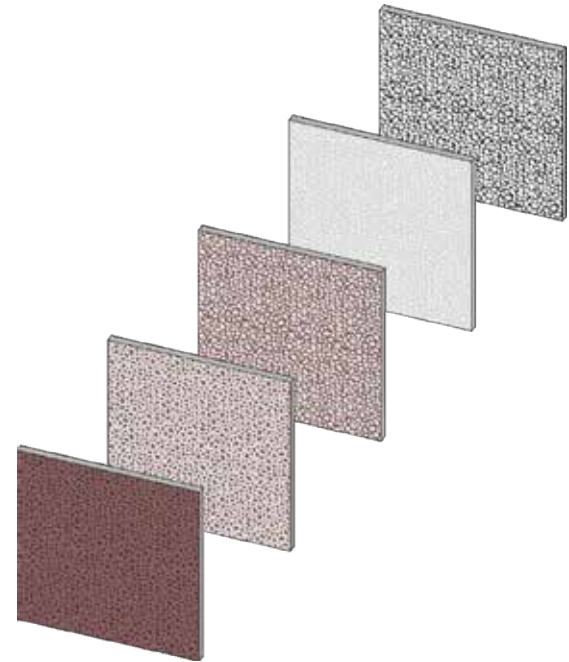
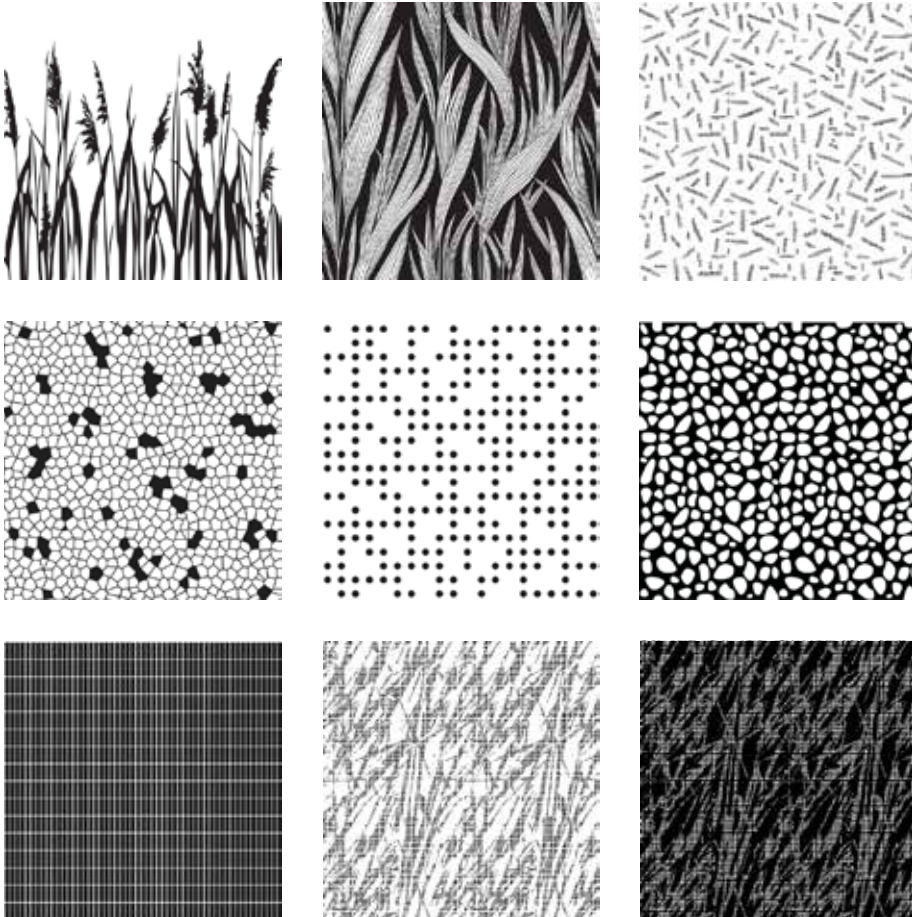
The element is high pressure washed.



The element dries and waits to be transported to the building site.

GCCollection™ patterns available as library to REVIT and Archicad

Our GCCollection™ is designed to support the work of designers. Now, we've made it even easier by introducing our ready-made standard pattern collection, available in the most popular design programs for architects: REVIT and Archicad. You can download the collection as a material library directly from our website and use it in the 3D models of your projects: <https://graphicconcrete.com/product/gc-collection-patterns>



*Now it's your turn to
write your own story!*

Graphic Concrete Ltd.

Itälahdenkatu 18 C, 5 fl.
00210 Helsinki, Finland

tel. +358 20 731 0290
info@graphicconcrete.com

www.graphicconcrete.com

